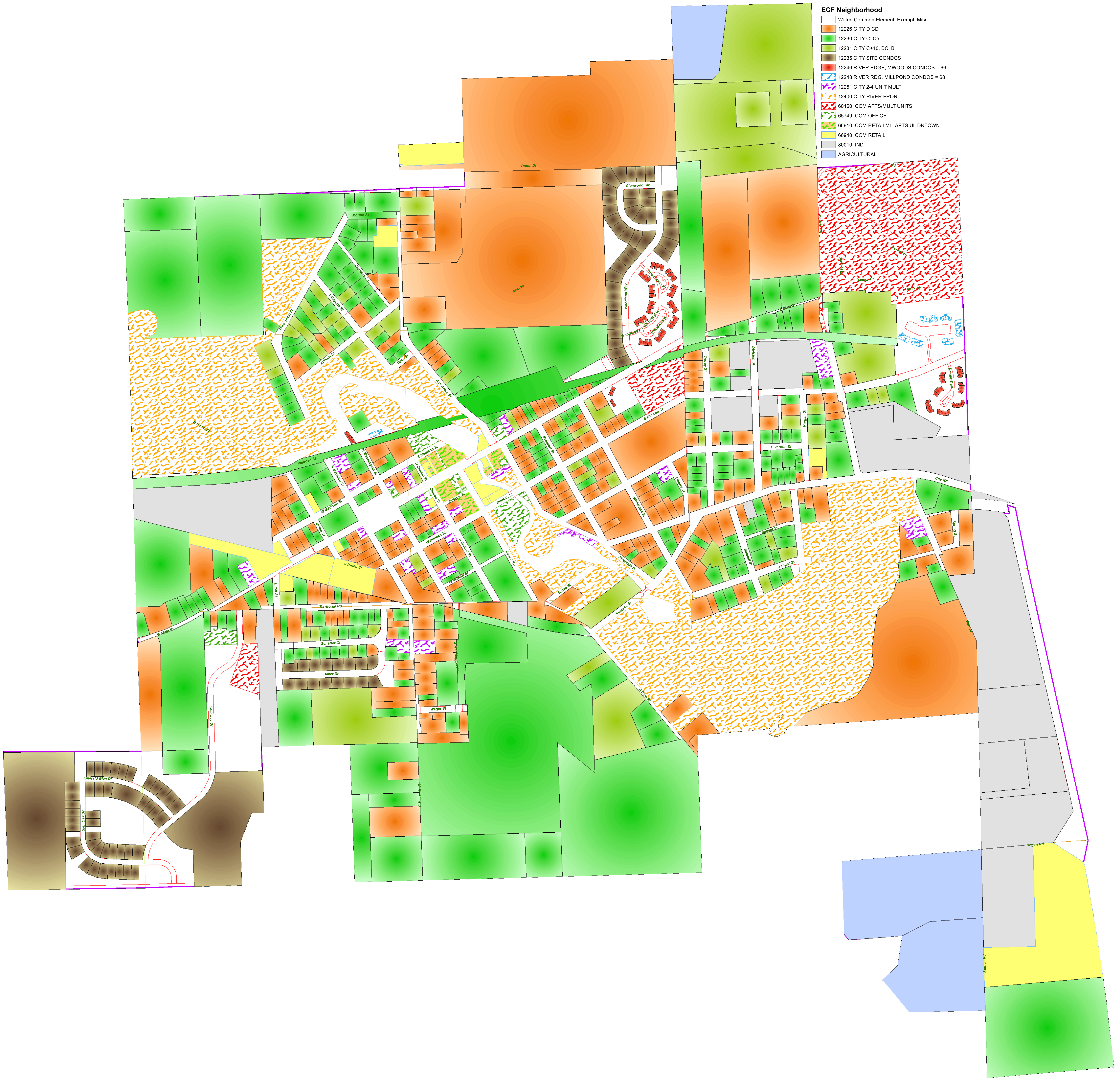
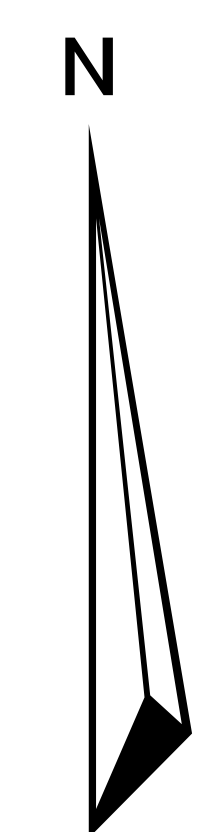
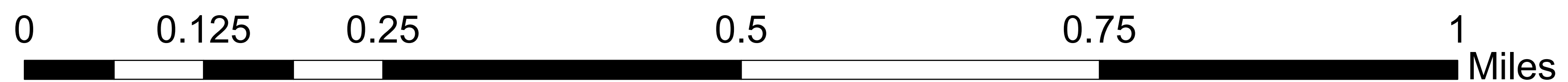


Manchester City 2025 ECF Map



- ECF Neighborhood**
- Water, Common Element, Exempt, Misc.
 - 12226 CITY D CD
 - 12230 CITY C_C5
 - 12231 CITY C+10, BC, B
 - 12235 CITY SITE CONDOS
 - 12246 RIVER EDGE, MWOODS CONDOS = 66
 - 12248 RIVER RDG, MILLPOND CONDOS = 68
 - 12251 CITY 2-4 UNIT MULT
 - 12400 CITY RIVER FRONT
 - 60160 COM APTS/MULT UNITS
 - 65749 COM OFFICE
 - 66910 COM RETAILML APTS UL DNTOWN
 - 66940 COM RETAIL
 - 80010 IND
 - AGRICULTURAL

- Jurisdiction Boundary
- Section Line
- Quarter Section Line
- Parcels



The information contained in this cadastral map is used to locate, identify and inventory parcels of land in Washtenaw County for appraisal and taxing purposes only and is not to be construed as a "survey description". The information is provided with the understanding that the conclusions drawn from such information are solely the responsibility of the user. Any assumption of legal status of this data is hereby disclaimed.

NOTE: PARCELS MAY NOT BE TO SCALE